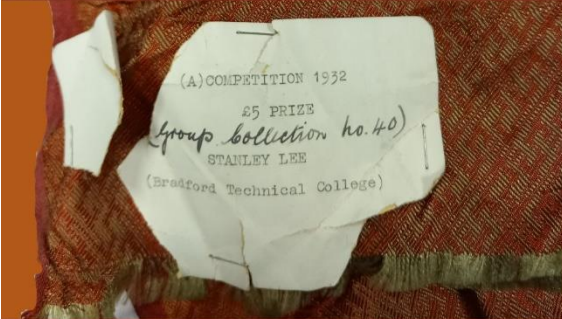




SPECIAL CENTENNIAL EDITION 1925 - 2025 \* SPECIAL CENTENNIAL EDITION 1925 - 2025 \* SPECIAL CENTENNIAL EDITION 1925 - 2025



## THE DESIGN COMPETITION

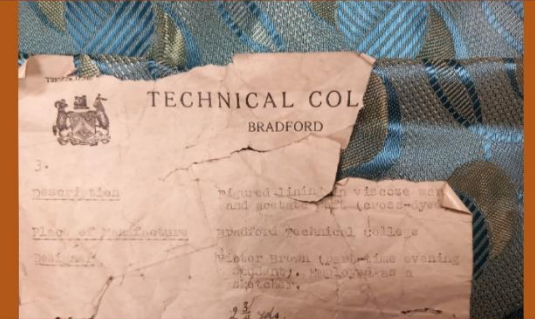


# 2025

organised by



## THE BRADFORD TEXTILE SOCIETY



SPECIAL CENTENNIAL EDITION 1925 - 2025 \* SPECIAL CENTENNIAL EDITION 1925 - 2025 \* SPECIAL CENTENNIAL EDITION 1925 - 2025



### SPONSORED BY:



# THE DESIGN COMPETITION 2025

## SPONSORS OF THE DESIGN COMPETITION

Alternative Flooring

Bradford School of Art

British Wool

Glencroft Ltd

J.H.Clissold & Son Ltd

LAPA Charitable Trust

Merchants of the Staple of England

Prestigious Textiles Ltd

The Association of Fashion and Textile  
Courses (FTC)

The Bradford Textile Society

The British Textile Designers Guild

The Campaign for Wool

The Clothworkers' Company

The Cotton Industry War Memorial Trust  
(CIWMT)

The Drapers' Company

The Retail and Textile Company

The Textile Institute

The Woolmark Company

The Worshipful Company of Dyers

William Halstead Ltd

**Bradford Textile Society would like to thank all the Sponsors for their participation and generous support of the Design Competition.**

# THE DESIGN COMPETITION 2025

## CONTENTS

Sponsors of the Design Competition.....	Page	2
Contents.....	Page	3
Conditions of Entry & 2025 Live Awards Day.....	Pages	4
Entry Guidelines.....	Pages	5

### Categories overview:

<b>1st Year Undergraduate Students ONLY</b>	<b>K2, P3, W2.....</b>	<b>Page</b>	<b>6</b>
<b>Embroidery</b>	<b>E1, C1 .....</b>	<b>Pages</b>	<b>7, 14</b>
<b>Knit</b>	<b>K1, K2, K3.....</b>	<b>Pages</b>	<b>8, 6, 9</b>
<b>Print</b>	<b>P1, P2, P3, P4.....</b>	<b>Pages</b>	<b>10, 6, 11</b>
<b>Weave</b>	<b>W1F, W1N,W2.....</b>	<b>Pages</b>	<b>12, 6</b>
<b>Textiles using Merino Wool</b>	<b>AW1 .....</b>	<b>Page</b>	<b>13</b>
<b>Combined Textile Processes</b>	<b>C1 .....</b>	<b>Page</b>	<b>14</b>
<b>Multi-Media Construction and/or new Technologies</b>	<b>U1.....</b>	<b>Page</b>	<b>15</b>
<b>Sustainable Design</b>	<b>F1 .....</b>	<b>Page</b>	<b>16</b>
<b>Rug and Carpet Design</b>	<b>R1.....</b>	<b>Page</b>	<b>17</b>
<b>Campaign for Wool Award</b>	<b>CFW.....</b>	<b>Page</b>	<b>18</b>
<b>Merchants of the Staple of England Wool Special Award .....</b>		<b>Page</b>	<b>19</b>
<b>Special Awards .....</b>		<b>Pages</b>	<b>20, 21</b>
<b>The Annual Design Competition Centenary Year Special Award.....</b>		<b>Page</b>	<b>22</b>

## THE DESIGN COMPETITION 2025

### CONDITIONS OF ENTRY:

- The competition is open to all students at UK Universities and Colleges as well as UK based independent designers, with the exception of K2, P3 and W2 categories which are **reserved for 1<sup>st</sup> year undergraduates only**.
- An entry fee is payable for **EACH** entry: **£15 for students / £25 for independent designers**.
- **DO NOT** include your name or University on the images as this will lead to disqualification and a refund cannot be given.
- **Group entries by Universities/ College:** this is only available by agreement with the Secretary by **3<sup>rd</sup> March 2025**.
- Please ensure that you read and fulfil the brief for your chosen category entry.
- The same piece of work can only be entered once if entering multiple categories.
- Your email address may be given to a third party for the purpose of arranging prizes and invitation to events by our Sponsors.
- Ensure the email address you give us is one that can be checked regularly and please also check your junk mail.
- Copyrights will remain with the entrant and your online entry cannot be seen by another entrant.
- The Society reserves the right to publish winning work on the Society's or Sponsors' website or social media.
- The judges' decisions are final, and judges reserve the right to question the authenticity of any work.
- Any infringement of the Conditions of Entry will be disqualified without a refund.

### IMPORTANT NEWS!

#### 2025 AWARDS DAY AND EXHIBITION

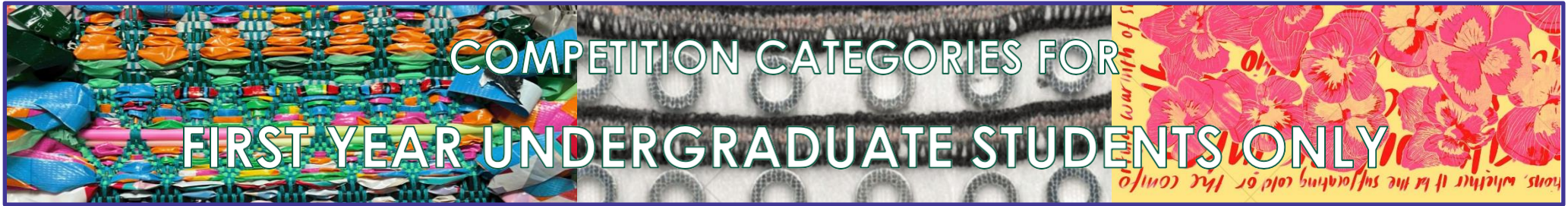
In celebration of Bradford City of Culture 2025, we are holding another live exhibition and awards day on **Friday 10<sup>th</sup> October 2025** in **The Dyehouse Gallery, Bradford School of Art**.

**Winners of 1<sup>st</sup> 2<sup>nd</sup> and 3<sup>rd</sup> prizes in each category will be asked to post their winning work to us for the exhibition.**

# THE DESIGN COMPETITION 2025

## ENTRY GUIDELINES:

- Entries are submitted for judging digitally via our website: [www.bradfordtextilesociety.org.uk](http://www.bradfordtextilesociety.org.uk)
- The competition entry form will go live on **Monday 24<sup>th</sup> March 2025**.
- The deadline for entries is **Midnight on Friday 9<sup>th</sup> May 2025**.
- Guidance for completion of the digital entry form will be available on our website once the competition goes live. **Please make sure you read this carefully before submitting your work.**
- Upload 2 images per entry; **6MB in total** in JPEG or PNG format but **not PDF**. Allowing time for the images to upload which will be indicated:
  - **Image 1:** a close up of the main sample.
  - **Image 2:** a development board, clearly showing context and details of materials and processes.
- **Ensure high-resolution images for the Judges.**
- You may submit up to 3 separate entries on one form into the same or different categories but the same piece of work can only be entered once.
- If you wish to submit more than 3 entries, this will need to be done on a new form, using a different email address.
- Indicate on the form if you wish the entry to **ALSO** be entered for the **Wool Special Award** if it contains more than 60% wool.
- Once the form is submitted, you will receive 2 emails:
  1. Confirmation of your entry.
  2. Payment details with a unique entry number and details of entry fee payments.
- Use the entry number as reference when making payments, this will need to be done within 24 hours of submission.
- Entries will only be sent for judging once the entry fee is received, unless your University has arranged for Group entry which can be indicated on the form.



**K2**

**THE BRADFORD TEXTILE SOCIETY AWARD**

A knitted fabric design which shows creative potential.

**P3**

**THE CLOTHWORKERS' COMPANY AWARD**

A printed textile design for either fashion or interiors which shows creative potential.

**W2**

**THE J.H. CLISSOLD & SON LTD AWARD**

A woven fabric design which shows creative potential.

**AWARDS FOR EACH SECTION**

**1st Prize:** £250 + certificate

**2nd Prize:** £150 + certificate

**3rd Prize:** £100 + certificate

Certificates of Commendation are also awarded at the discretion of the Judges.

**Please see the Wool Special Award also.**

# COMPETITION CATEGORIES FOR



# HAND EMBROIDERY

**E1**

## **THE LAPA CHARITABLE TRUST AWARD**

**An embroidered textile design for fashion/accessories or interior products, created using hand-embroidery techniques (no machine embroidery). A sample of the hand-embroidery must be included, together with an illustration of the final design/end-product.**

**Embellishments in the form of beads, sequins, buttons etc must not make up more than 25% of the final design.  
A finished product is not required.**

**1st Prize:** £500 + certificate

**2nd Prize:** £300 + certificate

**3rd Prize:** £200 + certificate

Certificates of Commendation are also awarded at the discretion of the Judges.

**Please see Sections P2, C1, U1, and the Wool Special Award also.**

# COMPETITION CATEGORIES FOR



# KNIT

## K1

### THE CLOTHWORKERS' COMPANY

A knitted fabric design for either fashion or interior products.

**1st Prize:** £500 + certificate

**2nd Prize:** £300 + certificate

**3rd Prize:** £200 + certificate

Certificates of Commendation are also awarded at the discretion of the Judges.

- **K2** Please refer to page 8 for the 1st Year Knit Section.

**Knit Continues next page**



# COMPETITION CATEGORY FOR



# FOR KNITWEAR GARMENT DESIGN

## K3

### **BRITISH WOOL & GLENCROFT LTD**

**Design for a contemporary twist on traditional country knitwear using 100% British wool.**

The entry should include 1 unique design for a knitwear garment with supporting information to include:

- fashion illustrations and a visualisation of the finished design
- technical construction notes
- visual or written inspiration behind the design
- fabric swatches and / or knitted samples executed in 100 % British Wool

The entrant should consider the commercial viability of an industrially-produced garment.

Design details such as buttons, clasps, buckles etc can be made of other materials but not make up more than 5% of the overall design.

**1st Prize:** £500 + certificate

Visit to British Wool and Glencroft studio  
Promotion of the design on British Wool and Glencroft social media  
Opportunity to work with Glencroft's knitwear team to see your design come to life.  
Possibility of commercial sampling and/ or production

**2nd Prize:** £300 + certificate

**3rd Prize:** £200 + certificate

Certificates of Commendation are also awarded at the discretion of the Judges.

**Please see the Wool Special Award also.**

Contact: [secretary@bradfordtextilesociety.org.uk](mailto:secretary@bradfordtextilesociety.org.uk)

# COMPETITION CATEGORIES FOR



# PRINT

## P1

### THE WORSHIPFUL COMPANY OF DYERS

A printed textile design for fashion.

**1st Prize:** £500 + certificate

**2nd Prize:** £300 + certificate

**3rd Prize:** £200 + certificate

Certificates of Commendation are also awarded at the discretion of the Judges.

## P2

### THE PRESTIGIOUS TEXTILES LTD AWARD

A textile design showing innovative use of colour, techniques and motifs.

We are looking for an exciting and interesting design that is inspired by current interior or fashion trends.

We would like to see print as part or all of the design entry.

**1st Prize:** 1 week placement in the design studios of Prestigious Textiles Ltd + £500 + certificate

**2nd Prize:** £300 + certificate

**3rd Prize:** £200 + certificate

Certificates of Commendation are also awarded at the discretion of the Judges.

Continues next page

# COMPETITION CATEGORIES FOR



# PRINT

## P4

### THE CIWMT AWARD

A textile design, printed on a cotton/cotton-blend fabric, or submitted as a paper design, suitable for a specific children's fashion or interiors collection. Illustration/visualisation must be included showing different uses of the design within the collection.

**1st Prize:** £500 + certificate

**2nd Prize:** £300 + certificate

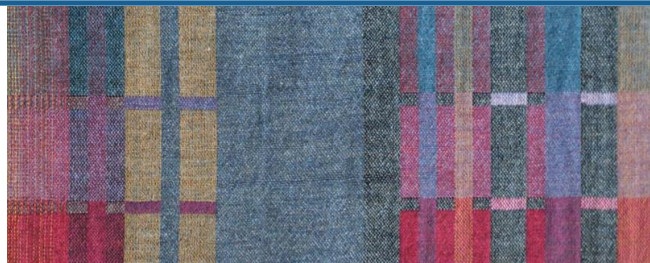
**3rd Prize:** £200 + certificate

Certificates of Commendation are also awarded at the discretion of the Judges.

\* P3 Please refer to page 8 for the 1st Year Print Section.

Please see the Wool Special Award also.

# COMPETITION CATEGORIES FOR



# WEAVE

## W1F

### THE CLOTHWORKERS' COMPANY AWARD

A woven fabric design for fashion/accessories.

**1st Prize:** £500 + certificate

**2nd Prize:** £300 + certificate

**3rd Prize:** £200 + certificate

Certificates of Commendation are also awarded at the discretion of the Judges.

## W1N

### THE CLOTHWORKERS' COMPANY AWARD

A woven fabric design for interior furnishings or products.

**1st Prize:** £500 + certificate

**2nd Prize:** £300 + certificate

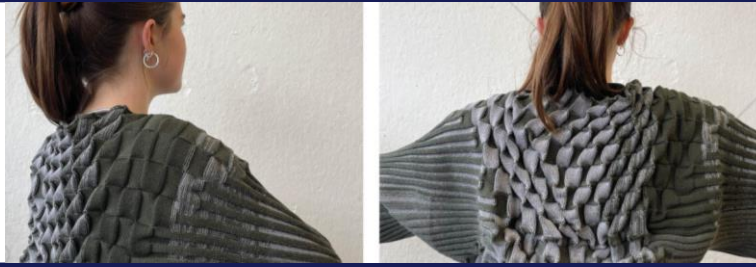
**3rd Prize:** £200 + certificate

Certificates of Commendation are also awarded at the discretion of the Judges.

\* **W2** Please refer to page 8 for the 1st Year Weave Section.

Please see Section AW1 and the Wool Special Award also.

**COMPETITION  
CATEGORY FOR**



**MERINO  
WOOL**

**AW1**

**THE WOOLMARK COMPANY**

**A textile design for a Merino Wool-rich fabric, of any construction, for fashion/accessories or for interior products.  
The fabric must contain a minimum 60% Merino wool and highlight the versatility and natural benefits of the luxury fibre.**

**1st Prize:** £500 + certificate

**2nd Prize:** £300 + certificate

**3rd Prize:** £200 + certificate

Certificates of Commendation are also awarded at the discretion of the Judges.

**A useful resource for this section is the Woolmark Learning Centre online.**

**Please see the Wool Special Award also.**

**COMPETITION  
CATEGORY FOR**



**COMBINED  
TEXTILE  
PROCESSES**

**C1**

**THE CLOTHWORKERS' COMPANY**

**A fabric design for fashion/accessories or interior products which shows an innovative combination of textile processes.**

Machine embroidery and beading may be included but should be combined with another self-created textile process, fabric manipulation or embellishment.

**1st Prize:** £500 + certificate

**2nd Prize:** £300 + certificate

**3rd Prize:** £200 + certificate

Certificates of Commendation are also awarded at the discretion of the Judges.

**Please see the Wool Special Award also.**

**COMPETITION  
CATEGORY FOR**



**MIXED  
MEDIA**

**U1**

**THE CLOTHWORKERS' COMPANY**

**A material construction, for either fashion/accessories or interior products, produced by non-conventional processes and/or materials or by new technologies.**

**1st Prize:** £500 + certificate

**2nd Prize:** £300 + certificate

**3rd Prize:** £200 + certificate

Certificates of Commendation are also awarded at the discretion of the Judges.

**Please see the Wool Special Award also.**

# COMPETITION CATEGORY FOR



# RESPONSIBLE DESIGN

**F1**

## **THE ASSOCIATION OF FASHION AND TEXTILE COURSES (FTC)**

**A textile or material sample which focuses on responsible design through either recycling, sustainable fibres, reconstruction, zero-waste techniques or design for the circular economy. Potential use for fashion, interiors, accessories or product should be communicated through illustration/visualisation.**

**1st Prize:** £500 + certificate

**2nd Prize:** £300 + certificate

**3rd Prize:** £200 + certificate

Certificates of Commendation are also awarded at the discretion of the Judges.

**Please see the Wool Special Award also.**



# COMPETITION CATEGORY FOR



# RUG AND CARPET DESIGN

## R1

### **BRITISH WOOL & ALTERNATIVE FLOORING**

Alternative Flooring's award-winning Quirky collection of patterned carpets, rugs and runners are designed and made in Britain using British wool.

**To design, for residential or commercial use, a carpet, rug or runner using British wool. The design must be entered as an illustration, either hand-drawn or digitally produced.**

Consideration must be given to the following :

- Maximum of 12 colours per design. These colours are available from [louisaknapp@britishwool.org.uk](mailto:louisaknapp@britishwool.org.uk)
- The design **NEEDS** to be in repeat, maximum repeat size 69cm x 69cm
- A visualisation of the finished design in-situ must be illustrated on the entry.
- The entry should indicate the method of construction, woven etc. and the visual and written inspiration behind the design.

**Entries will be judged on the above criteria.**

#### **1<sup>st</sup> Prize: £500 + certificate**

The opportunity to turn the winning design into full production is a possibility.

Certificates of Commendation may also be awarded at the discretion of the Judges.

The opportunity to turn the winning design into full production is a possibility.

**Please see the Wool Special Award also.**

# THE CAMPAIGN FOR WOOL AWARD



THE CAMPAIGN FOR WOOL  
Patron: HM King Charles III

**This award is open to entries from fashion and interior-design students in addition to textile-design students.**

## CFW

**A fashion or interior-product design which illustrates the natural benefits and sustainability of using wool.**

**Required:**

- A visualisation of the design plus any supporting images/mood board/samples.
- A statement setting out the wool materials selected and why they have been selected.
- A brief outline of the benefits of using wool in the design.

This section is designed to raise awareness of the planet-friendly properties and sustainability of wool.  
A useful resource is the Campaign for Wool website - [www.campaignforwool.org](http://www.campaignforwool.org)  
and Social feed: @campaignforwool

**Prize: £500 + certificate**

Certificates of Commendation may also be awarded at the discretion of the Judges.

**Please see the Wool Special Award also.**



# THE COMPANY OF MERCHANTS OF THE STAPLE OF ENGLAND



## SPECIAL AWARD FOR THE BEST DESIGN USING WOOL

**Award for the best design using wool (minimum 60%) chosen from ALL sections of the Design Competition.**

**Prize £1000 and possibility of short Industry Placement**

The Award is open to entrants of ALL sections of the Design Competition. The design should be commercially viable in whichever form you choose to use the wool. To qualify, entries **MUST** contain an overall minimum of **60% wool**.

Please indicate at Registration that your design fulfils the requirements of the brief above and you would like your entry to be considered for this Award **in addition to the section of original entry**.

All entries for AW1, CfW, K3 and R1 should by definition fulfil the brief so please enter your work for this Special Award.

### **EXPLANATORY NOTES**

The Company of Merchants of the Staple of England Wool Award is intended to encourage students and designers to use wool (in any form) in their designs. It is a Special Award, to be judged from entries to ALL the sections, provided that the design submitted fulfils the requirements of the brief **i.e. the design includes a minimum of 60% wool and the wool composition is clearly shown on the development board**. It is not restricted to constructed textiles, knit and weave, and could apply equally to all the other categories – print, embroidery, combined processes and new technologies. This Award is designed to encourage entrants to think 'outside the box' about how they could use wool in their designs.

**This is your opportunity to be creative with wool!**

**Shortlisted entrants for this award will be required to submit their actual boards in July (after New Designers).**

Further details will be sent in June to the successful candidates.

# **SPECIAL AWARDS**

## **THE WILLIAM HALSTEAD LTD 150<sup>TH</sup> ANNIVERSARY AWARD**

This Award is selected from all the prize-winning entries and will be awarded to the best entry which demonstrates commercial aptitude, taking into consideration sustainability, creativity and innovation.

**Award: £450 + certificate**

## **THE CLOTH OF KINGS AWARD**

A textile design which captures the artisan craft and skill of weaving or knitting with Noble Fibres such as wool, linen, silk or cashmere or a combination of these fibres.

**Award: Cloth of Kings Medal + certificate**

## **THE TRAVEL AWARD**

**(Sponsored by The Cotton Industry War Memorial Trust)**

The recipients of this Award are chosen from the prize-winning and commended entries across all sections of the competition.

**An expenses-paid visit to Premiere Vision,  
Paris for 4 prize-winners + certificates.**

## **THE TEXTILE INSTITUTE**

First prize-winners from each section will be given one year of membership to The Textile Institute.

## **THE DESIGNERS GUILD PLAQUE**

This Award is presented to a university/college or to an individual for outstanding work.

**Award: The Designers Guild Plaque**



## THE BRADFORD TEXTILE SOCIETY SPECIAL AWARD

*In Celebration of*

## THE ANNUAL DESIGN COMPETITION CENTENARY YEAR

**1925 - 2025**

We are proud to announce that 2025 will be our Annual Design Competition's Centenary year!

The Bradford Textile Society, founded in 1893, first introduced the Design Competition in 1925 and 2025 will be a double celebration with Bradford's year as City of Culture.

To commemorate this milestone the Society is sponsoring a special Centenary Award , chosen from **ALL the Competition entries**.

The winning entry will show: **Sustainability , Innovation and Textile Craftsmanship** and demonstrate why UK design education is considered best in the world.

Follow our celebration and exhibition news on our website [www.bradfordtextilesociety.org.uk](http://www.bradfordtextilesociety.org.uk)

**Award: £1,000 + certificate**