



# THE DESIGN COMPETITION 2022 -2023

organised by  
**THE BRADFORD TEXTILE SOCIETY**



BLANK PAGE

# **THE DESIGN COMPETITION 2022 - 2023**

## **SPONSORS OF THE DESIGN COMPETITION**

The Alternative Flooring Company

The Association of Fashion and Textile  
Courses

Bradford College

British Wool

The British Textile Designers Guild

The Campaign for Wool

J.H.Clissold & Son Ltd

The Clothworkers' Company

The Cotton Industry War Memorial Trust (CIWMT)

Glencroft Ltd

LAPA Charitable Trust

Luxury Fabrics Ltd

Merchants of the Staple of England  
Charitable Trust

Premiere Vision – Paris

Prestigious Textiles Ltd

Schofield Sweeney

John Smedley Ltd

The Drapers' Company

The Retail and Textile Company

The Textile Institute

The Woolmark Company

The Worshipful Company of Dyers

**Bradford Textile Society would like to thank all the Sponsors for their  
participation and generous support of the Design Competition.**



# THE DESIGN COMPETITION 2022 - 2023

## CONTENTS

Sponsors of the Design Competition

Welcome ..... Pages **1, 2**

Conditions of Entry ..... Pages **3, 4**

Categories of entry for:-

<b>1st Year Undergraduate Students</b>	<b>K2, P3, W2.....</b>	Page	<b>5</b>
<b>Embroidery</b>	<b>E1, P2, C1, U1, .....</b>	Pages	<b>6, 9, 13, 14</b>
<b>Knit</b>	<b>K1, K3, K2, AW1 .....</b>	Pages	<b>7, 8, 5, 12</b>
<b>Print</b>	<b>P1, P2, P4, P3.....</b>	Pages	<b>9, 10, 5</b>
<b>Weave</b>	<b>W1-F, W1-N,W2, P2, AW1, R1 .....</b>	Pages	<b>11, 5, 9, 12, 16</b>
<b>Constructed Textiles using Merino Wool</b>	<b>AW1 .....</b>	Page	<b>12</b>
<b>Combined Textile Processes</b>	<b>C1 .....</b>	Page	<b>13</b>
<b>Multi-Media Construction and/or new Technologies</b>	<b>U1.....</b>	Page	<b>14</b>
<b>Responsible Design</b>	<b>F1 .....</b>	Page	<b>15</b>
<b>Rug and Carpet Design</b>	<b>R1.....</b>	Page	<b>16</b>
<b>Campaign for Wool Award</b>	<b>CFW.....</b>	Page	<b>17</b>

**Merchants of the Staple of England Wool Special Award** ..... Page **18**

**Special Awards** ..... Pages **19, 20**



# **THE DESIGN COMPETITION 2022 - 2023**

## **WELCOME**

This Prospectus Pack includes all the relevant information to enter the Design Competition 2022– 2023.

If you have any queries or comments please do not hesitate to contact us by email (details page 3). This prospectus contains 24 pages in total.

## **PLEASE NOTE**

Once again, the Design Competition will be operated online.

Via our website, entrants are asked to complete the registration details and upload 2 images of their entry -

1. Should be a close-up of their Main Sample, clearly labelled as such.
2. Should be a development board, outlining context, materials and processes.

A unique entry number will be emailed to each entrant who can then pay the entry fee online using the number as a reference.

You may enter as many entries and sections as you wish but the same piece of work cannot be entered in more than 1 section.

Entries will only be submitted for judging once the entry fee has been paid.

As security is paramount, entrants will not be able to see the work of others.

**THE WEBSITE WILL BE OPEN TO ACCEPT ENTRIES FROM MONDAY 3 APRIL 2023**

**THE DEADLINE FOR ENTRIES IS MIDNIGHT ON FRIDAY 28 APRIL 2023**

We are hoping to have a physical exhibition and Awards day in 2023 and will keep tutors notified.

# THE DESIGN COMPETITION 2022 - 2023

The Contents page gives a quick guide to what is included in this prospectus and details of all the categories and relevant sections for the different categories.

## **IMPORTANT**

- ◇ Don't forget about the Special Wool Award when deciding which materials to use in your design.
- ◇ A single piece of work can only be entered into one section even if multiple entry fees are sent. YOU CANNOT WIN MULTIPLE PRIZES WITH THE SAME WORK.
- ◇ Please do not include your name or any other identifying information (eg university, school of art) on the images of your entry as this will result in instant disqualification. Whilst we were lenient this year this will not be the case in the future and no refunds will be made.
- ◇ Please ensure you have labelled your main sample and that it is clearly visible.
- ◇ We do not ask for full technical details to be submitted upon entry but reserve the right to ask for them if the Judges require them.
- ◇ Email addresses may be given to a third party for the purpose of arranging prizes.
- ◇ Please use an email address which will not be terminated once you have graduated (for entrants completing their degrees).
- ◇ Please check your emails regularly. If there are any problems with entry uploads we will do our best to contact you to resolve issues.
- ◇ We reserve the right not to refund entry fees if we have attempted to contact an entrant on the email given and there has been no response.

# THE DESIGN COMPETITION 2022 - 2023

## CONDITIONS OF ENTRY - PLEASE READ CAREFULLY

### 1. ENTRIES MAY BE SUBMITTED:

MONDAY 3RD APRIL TO FRIDAY 28TH APRIL 2023

Please Note - Entries will not be accepted after MIDNIGHT ON 28TH APRIL 2023

### 2. CONTACT DETAILS:

EMAIL: [competition@bradfordtextilesociety.org.uk](mailto:competition@bradfordtextilesociety.org.uk)

WEBSITE: [www.bradfordtextilesociety.org.uk](http://www.bradfordtextilesociety.org.uk)

### 3. ENTRANTS:

All sections, except for **K2, P3 and W2** (1st year undergraduate students only) are open to independent designers, designers employed in the UK textile industry and students from UK universities and colleges. All entrants must be resident in the UK or studying in the UK.

### 4. FIRST YEAR SECTIONS:

K2, P3 and W2 are for first-year undergraduate work only. We rely upon the honesty and integrity of students who enter these sections. If this rule is found to be contravened the entry will be disqualified and no refunds given.

### 5. ENTRY FEES:

An entry fee is payable for each entry submitted.

The entry fee for students is £15 per entry.

The entry fee is £25 per entry for independent designers/entrants employed in industry.

Payment must be made online within 24 hours of submitting the entry, using the unique entry reference number emailed from Bradford Textile Society after submission of the entry. **There is no facility for Group payments this year.**

Entries for which no entrance fee has been received will not be entered into the competition.



# THE DESIGN COMPETITION 2022 - 2023

## CONDITIONS OF ENTRY - continued

### 6. FORM OF SUBMISSION:

Each entry must include 2 images which must be submitted on registration.

1. A close-up image of the main sample, labelled as such.
2. A development board outlining context, materials and processes.

The maximum file size is 6MB and must be submitted as JPEG or PNG **NOT** PDF. **Please allow time for your files to upload.** Technical details are not required initially but we reserve the right to ask for them if required by the Judges.

### 7. COPYRIGHT:

Whilst the copyright of all work submitted to the Design Competition remains with the entrant, Bradford Textile Society reserves the right to use the work in publicity material, published both in hard copy and on the internet.

### 8. JUDGING:

The Judges' decision shall in all cases be final and binding.

The Judges' reserve the right to satisfy themselves of the authenticity of any work. If an entry is considered to be an infringement of the Conditions of Entry it will be disqualified without refund.

### 9. RESULTS:

The Winners' List will be published on the Bradford Textile Society website and we will attempt to notify prize winners by email.

**THANK YOU AND THE BEST OF LUCK TO EVERYONE!**



# COMPETITION CATEGORIES FOR FIRST YEAR UNDERGRADUATE STUDENTS ONLY

**K2**

## **THE JOHN SMEDLEY LTD AWARD**

A knitted fabric design which shows creative potential.

**P3**

## **THE CLOTHWORKERS' COMPANY AWARD**

A printed textile design for either fashion or interiors which shows creative potential.

**W2**

## **THE J.H. CLISSOLD & SON LTD AWARD**

A woven fabric design which shows creative potential.

### **AWARDS FOR EACH SECTION**

**1st Prize:** £250 + certificate

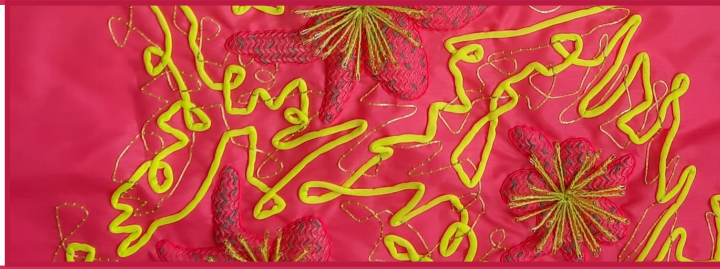
**2nd Prize:** £150 + certificate

**3rd Prize:** £100 + certificate

Certificates of Commendation are also awarded at the discretion of the Judges.

Please see the Wool Special Award also.

# COMPETITION CATEGORIES FOR



# EMBROIDERY

## E1

### THE LAPA CHARITABLE TRUST AWARD

An embroidered textile design for fashion/accessories or interior products, created using hand-embroidery techniques (no machine embroidery). A sample of the hand-embroidery must be included, together with an illustration of the final design/end-product.

Embellishments in the form of beads, sequins, buttons etc must not make up more than 25% of the final design.  
A finished product is not required.

**1st Prize:** £500 + certificate

**2nd Prize:** £300 + certificate

**3rd Prize:** £200 + certificate

Certificates of Commendation are also awarded at the discretion of the Judges.



# COMPETITION CATEGORIES FOR



# KNIT

## K1

### THE CLOTHWORKERS' COMPANY

A knitted fabric design for either fashion or interior products.

**1st Prize:** £500 + certificate

**2nd Prize:** £300 + certificate

**3rd Prize:** £200 + certificate

Certificates of Commendation are also awarded at the discretion of the Judges.

- **K2** Please refer to page 5 for the 1st Year Knit Section.

Continued

COMPETITION  
CATEGORY FOR



FOR KNITWEAR  
GARMENT DESIGN

**K3**

**BRITISH WOOL & GLENCROFT LTD**

**Design for a contemporary twist on traditional country knitwear using 100% British wool.**

The entry should include 1 unique design for a knitwear garment with supporting information to include -

- fashion illustrations and a visualization of the finished design
- technical construction notes
- visual or written inspiration behind the design
- fabric swatches and/or knitted samples executed in 100% British Wool.

Consideration must be given to the following:-

The entrant should consider commercial viability of an industrially-produced knitwear garment

Design details such as buttons, clasps, buckles etc. can be made of other materials  
but not make up more than 5% of the overall design.

**1st Prize:** £500 + certificate + a manufactured sample garment of the winning design +  
if feasible, the winning design may be considered for commercial production

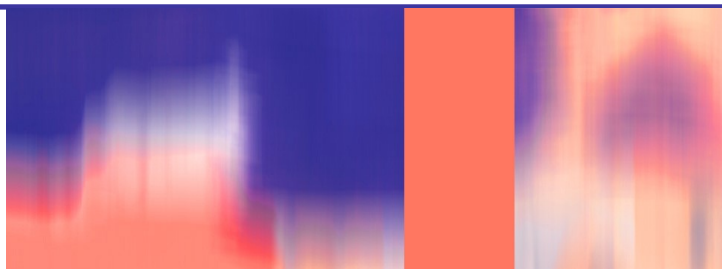
**2nd Prize:** £300 + certificate

**3rd Prize:** £200 + certificate

Certificates of Commendation are also awarded at the discretion of the Judges.

**Please see the Wool Special Award also.**

COMPETITION  
CATEGORIES FOR



PRINT

**P1**

**THE WORSHIPFUL COMPANY OF DYERS**

**A printed textile design for fashion.**

**1st Prize:** £500 + certificate

**2nd Prize:** £300 + certificate

**3rd Prize:** £200 + certificate

Certificates of Commendation are also awarded at the discretion of the Judges.

**P2**

**THE PRESTIGIOUS TEXTILES LTD AWARD**

**A textile design suitable for domestic curtains, upholstery, cushions and blinds, drawn in repeat. This can be either a printed design using digital or conventional printing, a woven jacquard or woven plain, or for drapery only, an embroidery.**

**1st Prize:** 1 week placement in the design studios of Prestigious Textiles Ltd + £500 + certificate

**2nd Prize:** £300 + certificate

**3rd Prize:** £200 + certificate

Certificates of Commendation are also awarded at the discretion of the Judges.



# COMPETITION CATEGORIES FOR



# PRINT

## P4

### THE CIWMT AWARD

A textile design, printed on a cotton/cotton-blend fabric, or submitted as a paper design, suitable for a specific children's fashion or interiors collection.

Illustration/visualisation must be included showing different uses of the design within the collection.

**1st Prize:** £500 + certificate

**2nd Prize:** £300 + certificate

**3rd Prize:** £200 + certificate

Certificates of Commendation are also awarded at the discretion of the Judges.

\* P3 Please refer to page 5 for the 1st Year Print Section.

Please see the Wool Special Award also.

# COMPETITION CATEGORIES FOR



# WEAVE

## W1F

### THE CLOTHWORKERS' COMPANY AWARD

A woven fabric design for fashion/accessories.

**1st Prize:** £500 + certificate

**2nd Prize:** £300 + certificate

**3rd Prize:** £200 + certificate

Certificates of Commendation are also awarded at the discretion of the Judges.

## W1N

### THE CLOTHWORKERS' COMPANY AWARD

A woven fabric design for interior furnishings or products.

**1st Prize:** £500 + certificate

**2nd Prize:** £300 + certificate

**3rd Prize:** £200 + certificate

Certificates of Commendation are also awarded at the discretion of the Judges.

**\* W2 Please refer to page 5 for the 1st Year Weave Section.**

**Please see Sections P2, AW1, and the Wool Special Award also.**

**COMPETITION  
CATEGORY FOR**



**MERINO  
WOOL**

**AW1**

**THE WOOLMARK COMPANY**

**A textile design for a Merino Wool-rich fabric, of any construction, for fashion/accessories or for interior products.**

**The fabric must contain a minimum 60% Merino wool and highlight the versatility and natural benefits of the luxury fibre.**

**1st Prize:** £500 + certificate

**2nd Prize:** £300 + certificate

**3rd Prize:** £200 + certificate

Certificates of Commendation are also awarded at the discretion of the Judges.

**A useful resource for this section is the Woolmark Learning Centre online.**

**Please see the Wool Special Award also.**



**COMPETITION  
CATEGORY FOR**



**COMBINED  
TEXTILE  
PROCESSES**

**C1**

**THE CLOTHWORKERS' COMPANY**

**A fabric design for fashion/accessories or interior products which shows an innovative combination of textile processes.**

Machine embroidery and beading may be included but should be combined with another self-created textile process, fabric manipulation or embellishment.

**1st Prize:** £500 + certificate

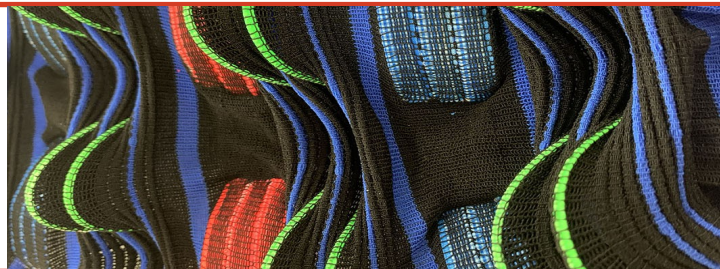
**2nd Prize:** £300 + certificate

**3rd Prize:** £200 + certificate

Certificates of Commendation are also awarded at the discretion of the Judges.

**Please see the Wool Special Award also.**

**COMPETITION  
CATEGORY FOR**



**MIXED  
MEDIA**

**U1**

**THE CLOTHWORKERS' COMPANY**

**A material construction, for either fashion/accessories or interior products, produced by non-conventional processes and/or materials or by new technologies.**

**1st Prize:** £500 + certificate

**2nd Prize:** £300 + certificate

**3rd Prize:** £200 + certificate

Certificates of Commendation are also awarded at the discretion of the Judges.

**Please see the Wool Special Award also.**

**COMPETITION  
CATEGORY FOR**



**RESPONSIBLE  
DESIGN**

**F1**

**THE ASSOCIATION OF FASHION AND TEXTILE COURSES**

**A textile or material sample which focuses on responsible design through either recycling, sustainable fibres, reconstruction, zero-waste techniques or design for the circular economy. Potential use for fashion, interiors, accessories or product should be communicated through illustration/visualisation.**

**1st Prize:** £500 + certificate

**2nd Prize:** £300 + certificate

**3rd Prize:** £200 + certificate

Certificates of Commendation are also awarded at the discretion of the Judges.

**Please see the Wool Special Award also.**

# COMPETITION CATEGORY FOR



# RUG AND CARPET DESIGN

**R1**

## **BRITISH WOOL & THE ALTERNATIVE FLOORING COMPANY**

Alternative Flooring's award-winning Quirky collection of patterned carpets, rugs and runners are designed and made in Britain using British wool.

**To design, for residential or commercial use, a carpet, rug or runner using British wool.  
The design must be entered as an illustration, either hand-drawn or digitally produced.**

Consideration must be given to the following:

- Maximum of 12 colours per design. These colours are from a set colour palette available from [louisaknapp@britishwool.org.uk](mailto:louisaknapp@britishwool.org.uk)
- The design's repeat should be no more than 69cm X 69cm
- A visualisation of the finished design, in-situ, must be shown on the entry.
- The entry should indicate the method of construction, woven etc. and the visual and written inspiration behind the design.

**Entries will be judged on the above criteria.**

For further guidance on colours, yarns and sustainability for purpose, please email British Wool ([louisaknapp@britishwool.org.uk](mailto:louisaknapp@britishwool.org.uk))

### **Prize £500 + certificate**

- + The winning design will be made up professionally.
- + The winning design will be featured on Alternative Flooring's and British Wool's social media platforms.
- + The opportunity to turn the winning design into full production, is a possibility.

Certificates of Commendation are also awarded at the discretion of the Judges.

**Please see the Wool Special Award also.**



# THE CAMPAIGN FOR WOOL AWARD



**This award is open to entries from fashion and interior-design students in addition to textile-design students.**

## **CFW**

**A fashion or interior-product design which illustrates the natural benefits and sustainability of using wool.**

### **Required:**

An illustration/visualisation of the design plus any supporting images/mood board/samples  
and  
a statement setting out the wool materials selected, why they have been selected  
and a brief outline of the benefits of using wool in the design.

This section is designed to raise awareness of the planet-friendly properties and sustainability of wool.

A useful resource is the Campaign for Wool website - [www.campaignforwool.org](http://www.campaignforwool.org)

and

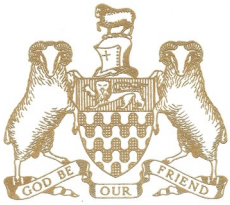
Social feed @campaignforwool

**Prize: £500 + certificate**

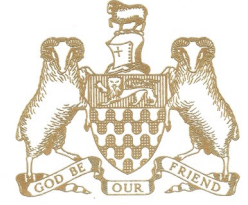
Certificates of Commendation are also awarded at the discretion of the Judges.

**Please see the Wool Special Award also.**





## THE COMPANY OF MERCHANTS OF THE STAPLE OF ENGLAND



### SPECIAL AWARD FOR THE BEST DESIGN USING WOOL

**Award for the best design using wool (minimum 60%) chosen from ALL sections of the Design Competition.**

**Prize £1000**

The Award is open to entrants of ALL sections of the Design Competition. The design should be commercially viable in whichever form you choose to use the wool. To qualify, entries **MUST** contain an overall minimum of **60% wool**.

Please indicate at Registration that your design fulfils the requirements of the brief above and you would like your entry to be considered for this Award **in addition to the section of original entry**.

All entries for AW1, K3 and R1 should by definition fulfil the brief so please enter your work for this Special Award (unfortunately, due to the online entry system, we cannot do this for you).

#### **EXPLANATORY NOTES**

The Company of Merchants of the Staple of England Wool Award is intended to encourage students and designers to use wool (in any form) in their designs. It is a Special Award, to be judged from entries to ALL the sections, provided that the design submitted fulfils the requirements of the brief **ie the design includes a minimum of 60% wool**. It is not restricted to the constructed textiles, knit and weave, but could apply equally to all the other categories – print, embroidery, combined processes and new technologies. This Award is designed to encourage entrants to think 'outside the box' about how they could use wool in their designs. For example, entries into section P1 could be printed on a wool base, entries into section E1 could be embroidered on to a wool base fabric using wool yarn and so on. This is your opportunity to be creative with wool !

# **SPECIAL AWARDS**

## **THE LUXURY FABRICS LTD AWARD**

This Award is selected from all the prize-winning entries and will be awarded to the entry deemed most outstanding by the Judges. The Judges will be looking for commercial aptitude, taking into consideration sustainability, creativity and innovation.

**Award: £350 + certificate**

## **THE CLOTH OF KINGS AWARD**

A textile design which captures the artisan craft and skill of weaving with Noble Fibres such as wool, linen, silk or cashmere or a combination of these fibres.

**Award: Cloth of Kings Medal + certificate**

# **SPECIAL AWARDS**

## **THE TRAVEL AWARD**

**(Sponsored by The Cotton Industry War Memorial Trust)**

The recipients of this Award are chosen from the prize-winning and commended entries across all sections of the competition.

**An expenses-paid visit to Premiere Vision, Paris  
for 4 prize-winners + certificates.**

## **THE TEXTILE INSTITUTE**

First prize-winners from each section will be given one year of membership to The Textile Institute.

## **THE DESIGNERS GUILD PLAQUE**

This Award is presented to a university/college or to an individual for outstanding work.

**Award: The Designers Guild Shield**